



277
250
200
150
100
75
50
25
20
15
10
5
01

LEGEND

| | |
|---|---|
|  | EXISTING STRUCTURE TO REMAIN. |
|  | NEW PROPRIETARY COLD-FORM PORTAL FRAME SHED AND STORAGE STRUCTURE, DESIGNED & CERTIFIED BY OTHER. |

GENERAL NOTES

NOTE: THIS SET OF DOCUMENTS IS TO BE READ IN CONJUNCTION WITH STRUCTABILITY SCOPE OF WORKS.

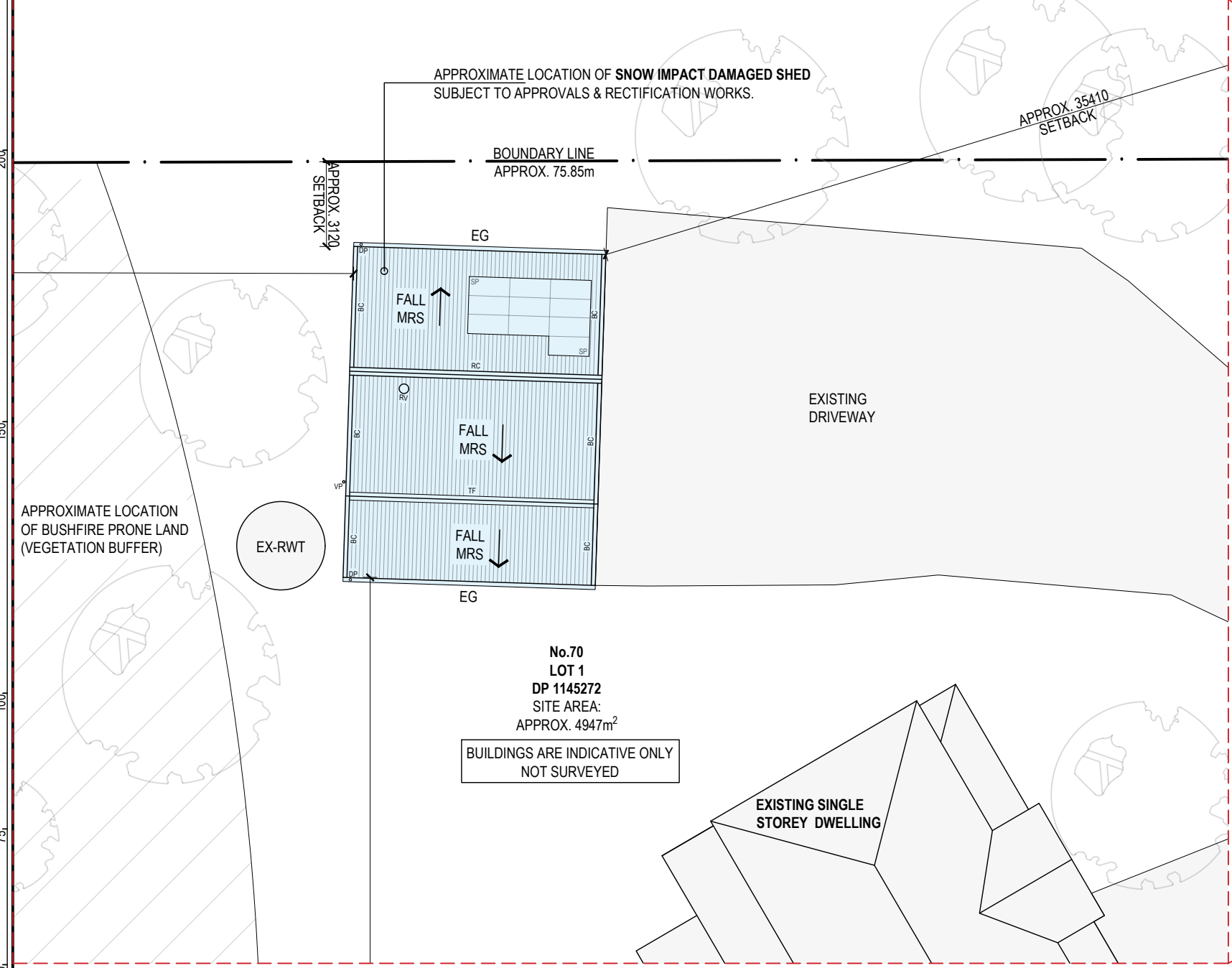
NOTE: ANY CHANGES FROM THE EXISTING BUILDING MATERIALS MUST BE APPROVED IN WRITING BY THE INSURED PRIOR TO COMMENCEMENT OF THE RECONSTRUCTION OF THIS BUILDING.

NOTE: ALL MATERIALS UTILISED IN THE WORKS ARE TO BE NEW, EQUAL IN QUALITY, COMPATIBLE WITH THE EXISTING AND CURRENTLY COMMERCIALY AVAILABLE. WASTAGE FACTORS ARE TO BE ALLOWED WITHIN THE TENDER ASSOCIATED WITH CUTTING, BREAKAGE, FITTING AND INSTALLATION.

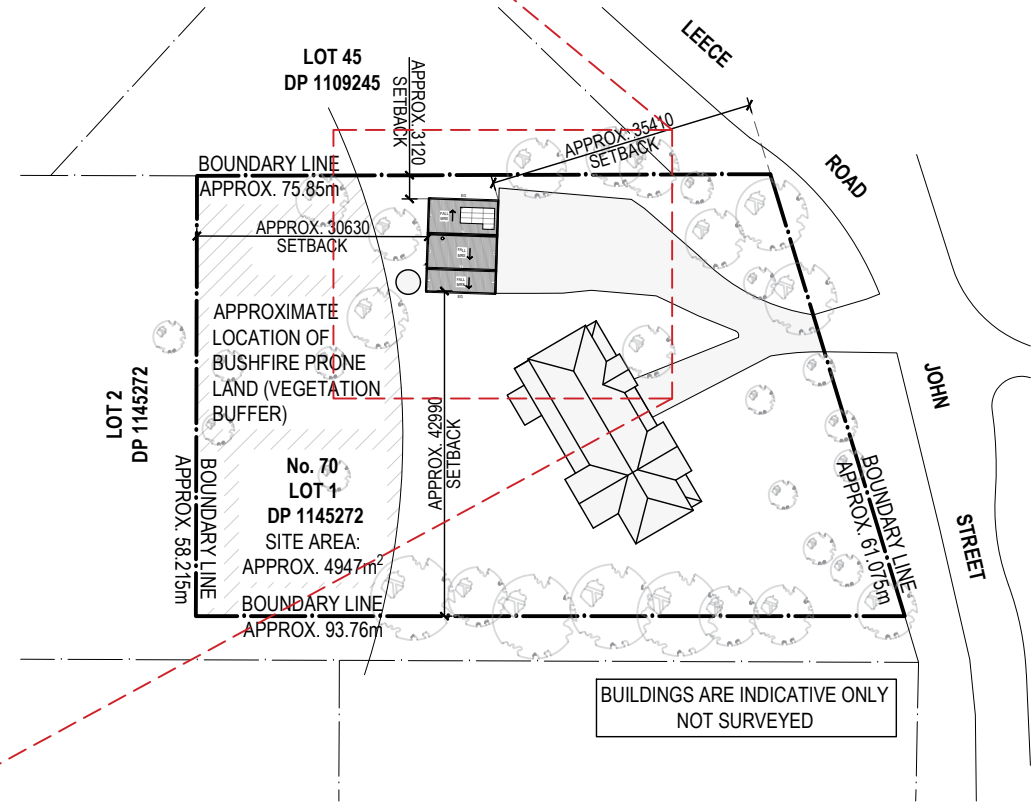
| | |
|-------------------------|---|
| RP: | LOT 1 DP 1145272 |
| LOCAL AUTHORITY: | URALLA SHIRE COUNCIL |
| LAND ZONING: | R1-GENERAL RESIDENTIAL |
| HERITAGE: | ROCKY RIVER GOLDMINING PRECINCT SIGNIFICANCE: LOCAL |
| LAND AREA: | APPROX. 4947m ² |

SITE PLAN NOTES

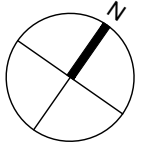
- ALL LOCATIONS OF BUILDINGS SHOWN INDICATIVELY ONLY. CONFIRM ON SITE.
- DO NOT SCALE OF COPIED DRAWINGS. WRITTEN DIMENSIONS ARE TO TAKE PRECEDENCE. **CONFIRM DIMENSIONS ON SITE PRIOR TO ORDERING OF MATERIALS.** DIMENSIONS ARE TO FACE OF FINISHED STUD/ MASONRY WALLS.
- ALL MEASUREMENTS & AREAS NOTED ARE APPROXIMATE. ALLOW TO SITE MEASURE ALL.
- BUILDER TO VERIFY THE LOCATION OF ALL SERVICES PRIOR TO CONSTRUCTION.
- ALLOW TO PROTECT ALL WATER, DRAINAGE, GAS & ELECTRICAL MAINS SERVICES & ALLOW TO BLANK OFF WHERE REQUIRED & LEAVE READY FOR RECONNECTION.
- SEWER CONNECTION POINTS TO BE VERIFIED WITH LOCAL AUTHORITY PRIOR TO CONSTRUCTION.
- STORMWATER TO BE CONNECTED TO LEGAL POINT OF DISCHARGE IN ACCORDANCE WITH AS 3500.3.2.
- ALL DRAINAGE & PLUMBING WORKS MUST BE CARRIED OUT BY A LICENCED PLUMBER/ DRAINER & STRICTLY IN ACCORDANCE WITH "THE STANDARD SEWERAGE BY-LAWS."
- PROVIDE ADEQUATE MEASURES TO CONTROL EROSION & SILT RUNOFF IN ACCORDANCE WITH THE ENVIRONMENT PROTECTION POLICIES OF THE RELEVANT LOCAL AUTHORITIES.



SITE PLAN
SCALE 1:200



LOCATION PLAN
SCALE 1:1000



STRUCTABILITY⁺
CONSULTING ENGINEERS

www.structability.com.au PO Box 596 KOGARAH, NSW 1485
02 8958 3531 Level 2, 631 Princess Highway, ROCKDALE, NSW 2216

| AMENDMENTS | | | | | |
|------------|------------|--|----|-----|--|
| REV | DATE | DESCRIPTION | BY | CHK | |
| C1 | 27.11.2025 | ISSUED FOR COMPLYING DEVELOPMENT CERTIFICATE | PL | DM | |
| B1 | 23.12.2025 | ISSUED FOR DEVELOPMENT APPLICATION | PL | DM | |
| C2 | 05.02.2026 | ISSUED FOR CONSTRUCTION CERTIFICATE | ZG | DM | |
| B2 | 20.05.2026 | ISSUED FOR MODIFIED DEVELOPMENT APPLICATION | ZG | DM | |

ENGINEERS AUSTRALIA
CHARTERED

SITE PLAN

RECTIFICATION WORKS TO SNOW DAMAGED SHED AT
70 JOHN STREET, URALLA NSW 2358
AMBROSE # 20235615-23

| | | | |
|---|-----------------|--------------------|---------|
| bdca ACCREDITED BUILDING DESIGNER | | MODIFIED DA | |
| SCALE: AS NOTED | DATE: DEC. 2025 | CHECKED: DM | REV: B2 |
| DRAWN: PL | APPROVED: DM | SHEET: A3 | |
| PROJECT No: 202508-6191 | DWG No: A004 | | |

COPYRIGHT © THE PLANS, DESIGN AND INFORMATION CONTAINED IN THIS DOCUMENT ARE THE COPYRIGHT OF STRUCTABILITY PTY. LTD. USE OR COPYING OF THIS DOCUMENT IN WHOLE OR IN PART, WITHOUT THE EXPRESS WRITTEN PERMISSION FROM STRUCTABILITY PTY. LTD. CONSTITUTES AN INFRINGEMENT OF THE COPYRIGHT.