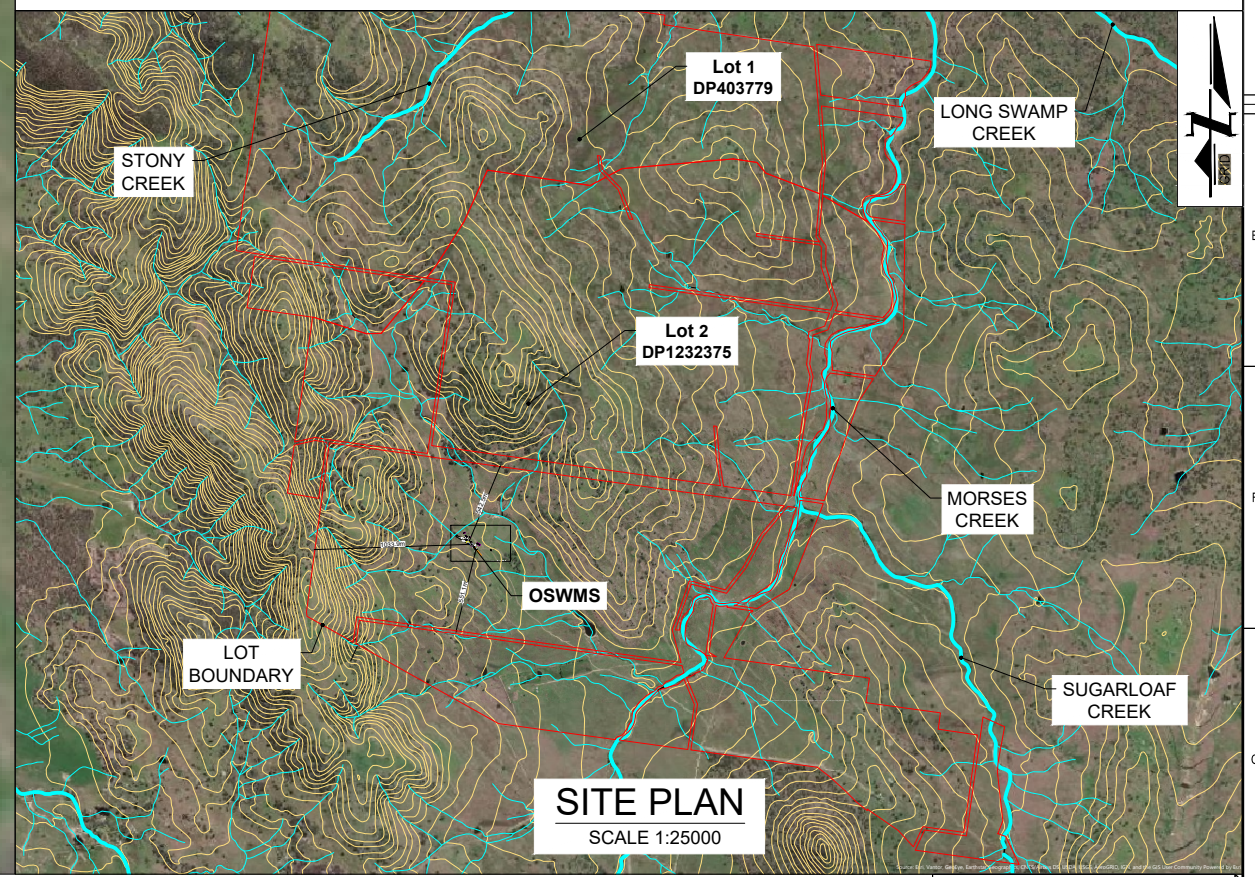


NOTES:

- THIS DOCUMENT REFERENCES AS/NZ 1547:2012. THIS STANDARD (ON-SITE DOMESTIC WASTEWATER MANAGEMENT) WHICH COVERS ALL REQUIRED ASPECTS OF DESIGN. REFER TO THE STANDARD FOR CLARIFICATION.
- ETA (EVAPOTRANSPIRATION - ABSORPTION)/ ETS (EVAPOTRANSPIRATION - SEEPAGE) SYSTEMS USE SUBSURFACE ADSORPTION OF EFFLUENT INTO THE SOIL AND EVAPOTRANSPIRATION BY PLANTS. IT IS USUALLY USED IN LOCATIONS WITH LOW PERMEABILITY SOILS.
- L3: SURFACE VEGETATION FOR ETA/ETS BEDS/TRENCHES SHALL BE PLANTS SUCH AS GRASSES AND SHRUBS THAT TOLERATE WET CONDITIONS AND HAVE A HIGH EVAPOTRANSPIRATION CAPACITY.
- CL3: WHERE PRACTICABLE, THESE PLANTS SHOULD BE WELL EXPOSED TO THE SUN AND WIND. SUCH PLANTING SHOULD BE SELECTED ON THE BASIS OF LOCAL EXPERIENCE.
- L5.1: LAND APPLICATION AREAS (TRENCHES AND BEDS) SHALL BE LOADED EITHER BY GRAVITY VIA A DISTRIBUTION PIPE OR BY PRESSURE DOSING USING A PERFORATED PIPE OR LOW-PRESSURE EFFLUENT DISTRIBUTION (LPED) LINES, IN ACCORDANCE WITH AS/NZS 1547:2012. LPED LINES MAY BE USED TO PRESSURE-DOSE BOTH ETA/ETS TRENCHES AND BEDS.
- L5.4: SURFACE WATER SHALL BE DIVERTED AROUND THE PERIMETER AND UP-SLOPE OF THE LAND APPLICATION AREA. RAINFALL IS SHED FROM THE MOUNDED SURFACE OF THE ETA/ETS SYSTEM.
- CL6.1. THE TOTAL TRENCH OR BED IS NORMALLY DIVIDED INTO EQUAL PROPORTIONS. A DISTRIBUTION BOX ENSURES EVEN FLOW TO EACH TRENCH OR BED. DISTRIBUTION BOXES SHOULD BE CHECKED AS PART OF PERFORMANCE MONITORING INSPECTIONS TO CONFIRM THAT AN EVEN FLOW OF EFFLUENT IS BEING DIRECTED TO EACH DISTRIBUTION LINE.
- L7.3: A FILTER CLOTH SHALL BE LAID OVER THE DISTRIBUTION AGGREGATE TO PREVENT INGRESS BY HE COVER MATERIAL
- CL.8: PIPE AND FITTINGS COMPLYING WITH AS 24392.2, AS2698.2, AS/NZ 4129, AS/NZS 4130 OR AS/NZS 1477 ARE SUITABLE MATERIALS. ALL PIPE WORKS MUST BE DESIGNED AND INSTALLED IN ACCORDANCE WITH AUSTRALIAN STANDARDS AS/NZS 3500.2:2021 & AS/NZS 1547:2012.
- THE LAYOUT IS A GENERAL LAYOUT CONFIGURATION ONLY.
- FINAL DESIGN AND LAYOUT MAY ALTER THE CONFIGURATION BUT MUST NOT REDUCE THE MINIMUM APPLICABLE AREA.
- RESERVE AREAS IS TO ALLOW A FACTOR OF SAFETY AGAINST UNFORESEEN MALFUNCTION OR FAILURE, PERHAPS FOLLOWING INCREASED HOUSEHOLD OCCUPANCY OR INADVERTENT MISUSE OF THE SYSTEM.
- NSW SIX MAPS CADASTRAL DATA HAS BEEN USED FOR OFFSETS.
- THE DIGITAL ELEVATION MODEL (DEM) WAS SOURCED FROM GEOSCIENCE AUSTRALIA'S ELVIS ELEVATION AND DEPTH FOUNDATION SPATIAL DATA. CONTOURS AT 10 M INTERVALS WERE GENERATED IN QGIS IN THE ABSENCE OF SITE-SPECIFIC SURVEY DATA.
- ANY CHANGES TO THIS DESIGN MUST BE APPROVED BY THE DESIGN ENGINEER.
- ANY UNAPPROVED DESIGN VOIDS THIS DESIGN AND REPORT.

LEGEND

- LOT BOUNDARY
- CONTOURS (10 M)
- WATERWAYS
- PIPE WORK
- EXISTING STRUCTURE
- PROPOSED STRUCTURE
- ETA/ ETS SYSTEM (LAND APPLICATION AREA)
- RESERVE AREA
- SEPTIC TANK
- DISTRIBUTION BOX
- BH1 (TEST BORE HOLE LOCATION)



Wed, 14 Jan 2026 - 11:05am P:\EAG\002478 - GT\MULTISITE-OWMS_ADMCC-2024\REPORTS\4126 - 702 ATHOL RD, BALALACADY\4126.D.01.01 SITE PLAN REV.B.DWG C:\Users\manning

DRAWING NO.	REFERENCE DRAWING TITLE	REV	DATE	ISSUED FOR APPROVAL	REVISION DESCRIPTION	DRAWN	DWG CHECK	DESIGN	ENG DES CHECK	DRAFT SUPER APPROVALS	PROJECT APPROVAL
		B	14/01/2026	ISSUED FOR APPROVAL		CM	SL	SL	SL	SL	SL
		A	13/01/2026	ISSUED FOR APPROVAL		CM	SL	SL	SL	SL	SL

PREPARED FOR: **Sporting Shooters Association (NSW) Armidale Branch Inc.**
702 Athol Road, Balala, NSW, 2358

PREPARED BY: **EnviroAg Australia**
TOOWOOMBA OFFICE T: 07 4638 2228
PO BOX 411 560 TOOWOOMBA CONNECTION ROAD, WITTCOTT QLD 4352

DRAWN	CM	DATE	14/01/2026	TITLE	SPORTING SHOOTERS ASSOCIATION (NSW) ARMIDALE BRANCH INC. ON-SITE WASTE WATER DESIGN SITE PLAN AND DETAILS	
DWG CHECK	SL	DATE	14/01/2026	PROJECT NO.	24708	DRAWING NO.
DESIGN	SL	DATE	14/01/2026	CERTIFICATION	NC	24708.D.001.0.1
ENG DES CHECK	SL	DATE	14/01/2026	SCALE	AS SHOWN	
DRAFT SUPER	SL	DATE	14/01/2026	CADFILE	41426.D.001.0.1 Site plan RevB.dwg	
PROJECT APPROVAL	SL	DATE	14/01/2026	REVISION	B	